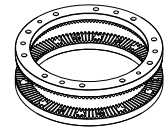


# Rotary indexing tables Rundschalttische

 **WEIGHT  
GEWICHT**

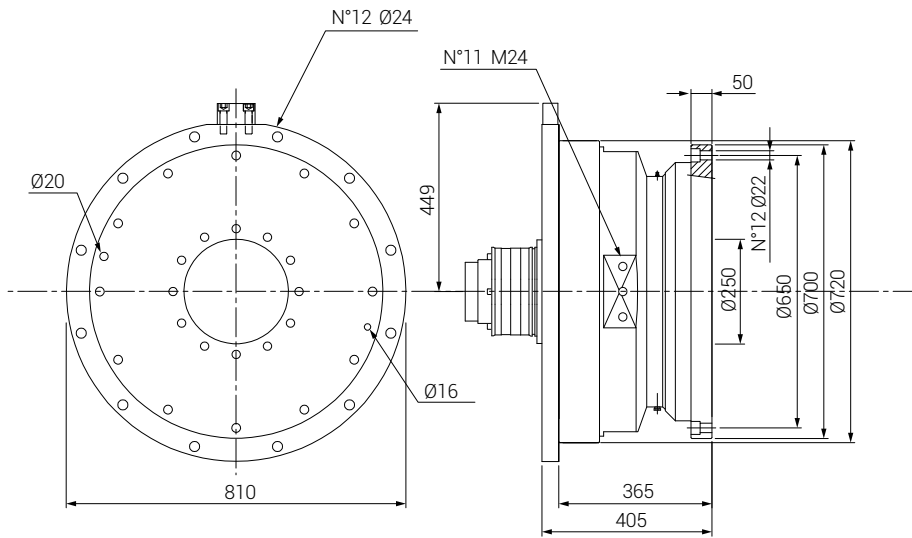
**750Kg**



VERTICAL AXIS  
VERTIKALACHSE

TEILUNGEN MIT HIRTH PLANVERZÄHUN  
INDEXING WITH HIRTH GEARS  
**Z120**

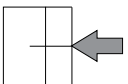
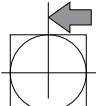
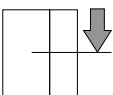
**TA 700 / Z120**



## TECHNICAL DATA / TECHNISCHEN DATEN

Indexing accuracy Teilgenauigkeit	On plate diameter Bei Tischdurchmesser	Table flatness Planlauf	Center accuracy Zentriergenauigkeit	Hydraulic plate unclamp Hydraulische Spannung	Clamping force Spannkraft	Rotation torque Drehmoment
+/- 5 Arc sec	+/- 0,008 mm	0,02 mm	0,03 mm	20 Bar	70000 N	1600 Nm

## WORKING FORCES / BEARBEITUNGSKRAFT

Axial working force Max. Axialdruck	Max radial force Max. Tangentialkraft	Max tilting moment Kippmoment
105 kN	11000 Nm	18000 Nm
		

## MAX CARRIED LOAD / MAX. TRANSPORTLAST

With vertical axis Vertikalachse	Max inertia moment Max. Trägheitsmoment
2000 Kg	600 kgm <sup>2</sup>
