

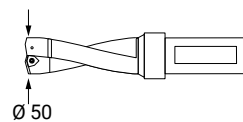


Machining spindles Spindeleinheiten

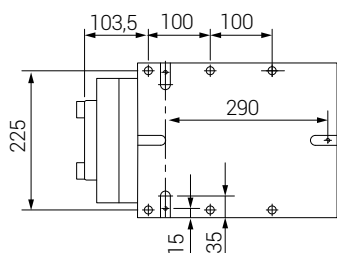
	MAX AXIAL LOAD MAX AXIALE BELASTUNG	25000 N
	WEIGHT GEWICHT	190 Kg



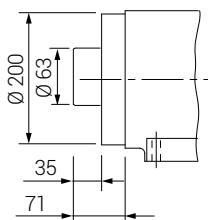
<p>SPINDLE RPM (50HZ) / SPINDELDREHZAHL</p> <table border="1"> <tr><td>A</td><td>160</td><td></td></tr> <tr><td>B</td><td>200</td><td>R6P</td></tr> <tr><td>C</td><td>250</td><td></td></tr> <tr><td>D</td><td>300</td><td></td></tr> <tr><td>E</td><td>400</td><td>R4P</td></tr> <tr><td>F</td><td>500</td><td></td></tr> <tr><td>G</td><td>600</td><td></td></tr> <tr><td>H</td><td>800</td><td>6P</td></tr> <tr><td>I</td><td>1000</td><td></td></tr> <tr><td>J</td><td>1200</td><td></td></tr> <tr><td>K</td><td>1500</td><td></td></tr> <tr><td>L</td><td>1800</td><td>4P</td></tr> <tr><td>M</td><td>2000</td><td></td></tr> <tr><td>N</td><td>2400</td><td></td></tr> <tr><td>O</td><td>3000</td><td>2P</td></tr> <tr><td>P</td><td>3600</td><td></td></tr> </table> <p>CHAIN WITH REDUCER GETRIEBEKETTE</p> <p>TIMING BELT ZAHNRIEMEN</p>	A	160		B	200	R6P	C	250		D	300		E	400	R4P	F	500		G	600		H	800	6P	I	1000		J	1200		K	1500		L	1800	4P	M	2000		N	2400		O	3000	2P	P	3600		<p>DRILLING CAPACITY IN STEEL R=60 BOHRLEISTUNG IN STAHL R=60</p> <p>Ø 50</p>	<p>MOTOR / MOTOR</p> <table border="1"> <tr><td>213</td><td>=</td><td>132</td><td>-</td><td>7.5 kW</td><td>2P</td></tr> <tr><td>412</td><td>=</td><td>132</td><td>-</td><td>7.5 kW</td><td>4P</td></tr> <tr><td>611</td><td>=</td><td>132</td><td>-</td><td>5.5 kW</td><td>6P</td></tr> </table> <p>Max frame 180 / Max Größe 180</p>	213	=	132	-	7.5 kW	2P	412	=	132	-	7.5 kW	4P	611	=	132	-	5.5 kW	6P	<p>TOOLHOLDER WERKZEUGAUFNAHME</p> <p>P = HSK 63 A U = ISO 50 DIN 2079</p>
A	160																																																																				
B	200	R6P																																																																			
C	250																																																																				
D	300																																																																				
E	400	R4P																																																																			
F	500																																																																				
G	600																																																																				
H	800	6P																																																																			
I	1000																																																																				
J	1200																																																																				
K	1500																																																																				
L	1800	4P																																																																			
M	2000																																																																				
N	2400																																																																				
O	3000	2P																																																																			
P	3600																																																																				
213	=	132	-	7.5 kW	2P																																																																
412	=	132	-	7.5 kW	4P																																																																
611	=	132	-	5.5 kW	6P																																																																

DX 58 /.. /.. /.. /..

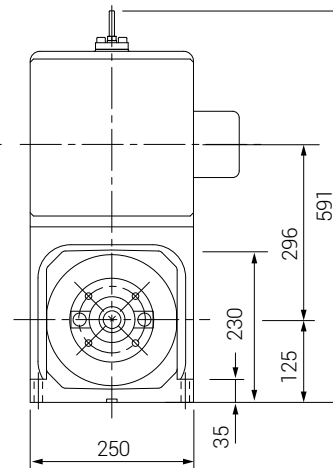
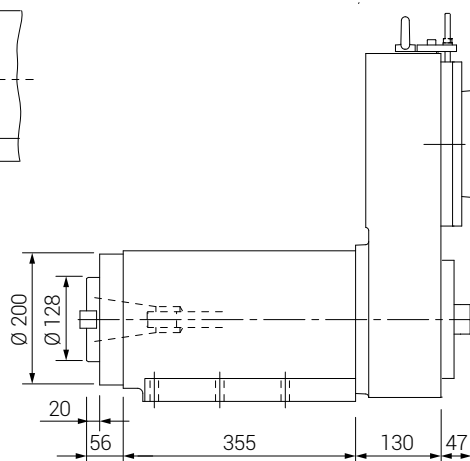
BEARINGS / LAGERUNG
RC = Taper roller bearings / Kegelrollenlager
CO = Angular contact bearings / Schrägkugellager



P



U



**COOLANT THROUGH FACILITY
MIT INNENKÜHLUNG**

**HYDRAULICALLY UNCLAMPED
HYDRAULISCHE ENTSPANNUNG**

**PNEUMATICALLY UNCLAMPED
VORBEREITUNG FÜR INNENKÜHLUNG**

