

# Machining spindles Spindeleinheiten



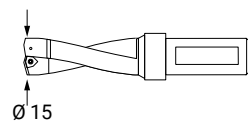
MAX AXIAL LOAD  
MAX AXIALE BELASTUNG

2500 N



WEIGHT  
GEWICHT

20 Kg



## SPINDLE RPM (50HZ) / SPINDELDREHZAHL

G	600	
H	800	6P
I	1000	
J	1200	
K	1500	
L	1800	4P
M	2000	
N	2400	
O	3000	2P
P	3600	
Q	4000	
R	4500	
S	5400	
T	6400	2P
U	7500	
V	8400	

TIMING BELT  
ZAHNRIEMEN

POLY - V BELT  
POLY - V RIEMEN

DRILLING CAPACITY  
IN STEEL R=60  
BOHRLEISTUNG  
IN STAHL R=60

Ø 15

## MOTOR / MOTOR

205	=	90	-	1.5 kW	2P
406	=	90	-	1.5 kW	4P
606	=	90	-	1.1 kW	6P

Max frame 90 / Max Größe 90

TOOLHOLDER  
WERKZEUGAUFNAHME

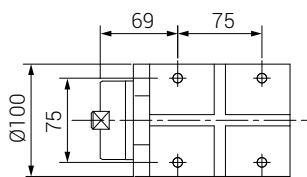
S = ISO 30 DIN 2079

**DX 22 /.. /.. /.. /..**

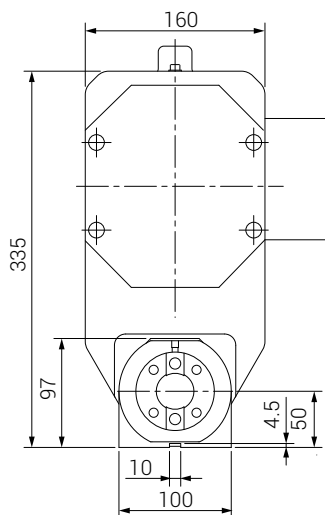
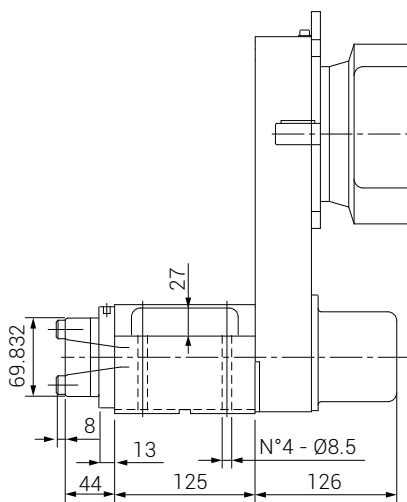
## BEARINGS / LAGERUNG

RC = Taper roller bearings / Kegelrollenlager

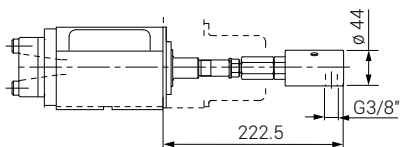
CO = Double pair of angular contact bearings/ Doppelpaar Schrägkugellager



**S**



COOLANT THROUGH FACILITY  
MIT INNENKÜHLUNG



MULTI-SPINDLE HEAD MOUNTING FLANGE  
AUFNAHME MEHRSPINDELKÖPFE

